

Pi48-2



- ▶ Two-stage COAX® cartridge - MIDI - with small mounting dimension for limited spaces.
- ▶ Vacuum level to 90 -kPa at low feed pressure.
- ▶ High system reliability in case of fluctuating or low feed pressure.
- ▶ Efficient generator of blow-air, recommended for overpressures between 0.05 and 0.14 MPa.

Technical data

Description	Unit	Value
Feed pressure, max.	MPa	0.7
Temperature range	°C	-10-80
Weight	g	27-57
Material		Al, NBR, PA, SS

Vacuum flow

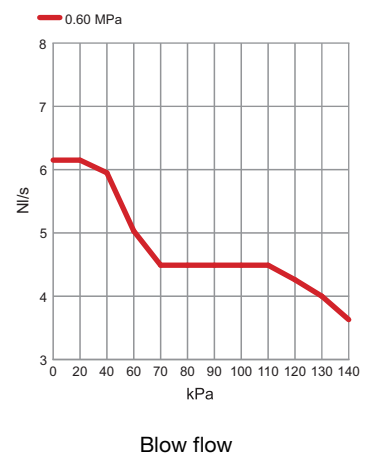
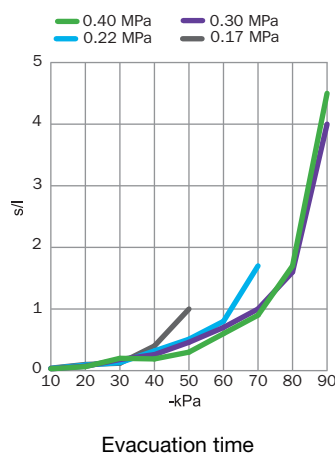
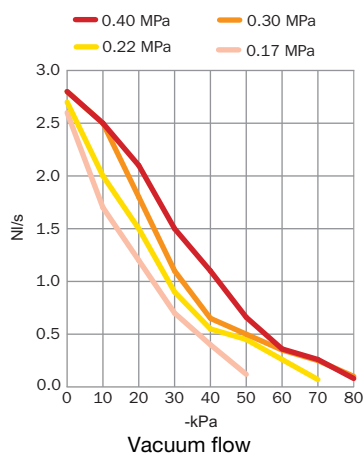
Feed pressure MPa	Air consumption NI/s	Vacuum flow (NI/s) at different vacuum levels (-kPa)										Max vacuum -kPa
		0	10	20	30	40	50	60	70	80		
0.17	1.37	2.6	1.7	1.2	0.70	0.40	0.12	—	—	—	—	55
0.22	1.62	2.7	2.0	1.5	0.90	0.55	0.45	0.26	0.07	—	—	73
0.30	2.0	2.8	2.5	1.8	1.1	0.65	0.50	0.35	0.25	0.1	—	90
0.40	2.54	2.8	2.5	2.1	1.5	1.1	0.66	0.36	0.26	0.08	—	86

Evacuation time

Feed pressure MPa	Air consumption NI/s	Evacuation time (s/l) to reach different vacuum levels (-kPa)										Max vacuum -kPa
		10	20	30	40	50	60	70	80	90		
0.17	1.37	0.040	0.10	0.20	0.40	1.0	—	—	—	—	—	55
0.22	1.62	0.035	0.090	0.18	0.32	0.51	0.80	1.7	—	—	—	73
0.30	2.0	0.030	0.070	0.13	0.26	0.46	0.70	1.0	1.6	4.0	—	90
0.40	2.54	0.030	0.065	0.12	0.19	0.30	0.60	0.90	1.7	4.5	—	86

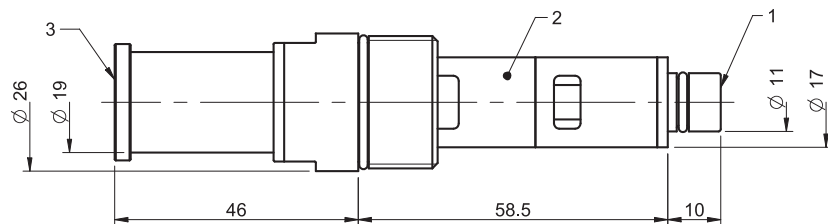
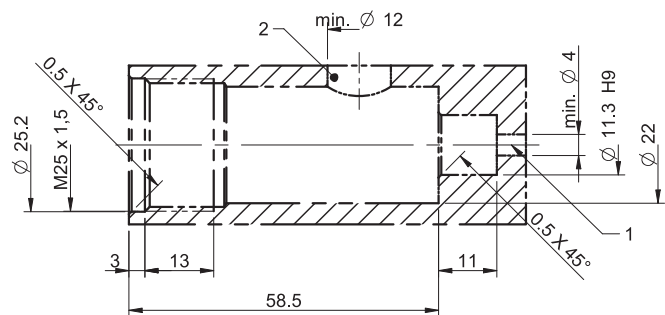
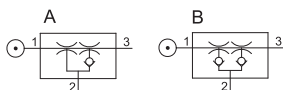
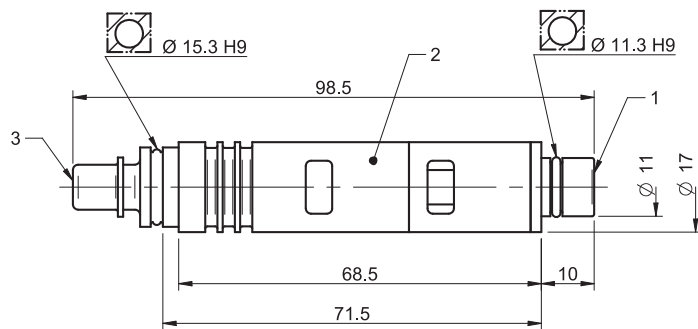
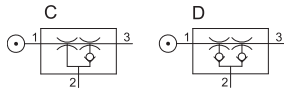
Blow flow

Feed pressure MPa	Air consumption NI/s	Blow flow (NI/s) at different pressure levels (kPa)												Max pressure kPa
		0	20	40	60	70	80	90	100	110	120	130	140	
0.6	3.5	6.15	6.15	5.95	5.03	4.49	4.49	4.49	4.49	4.49	4.26	4.0	3.63	140



Ordering information

	Description	Art. No.
C	COAX® cartridge MIDI Pi48-2	0107125
A	COAX® cartridge MIDI Pi48-2, holding cap	0107127
D	COAX® cartridge MIDI Pi48-2, extra non-return valve	0107710
B	COAX® cartridge MIDI Pi48-2, holding cap, extra non-return valve	0107712



Ordering information, accessories

Description	Art. No.
Silencer COAX® MIDI	0111976

Pi48-3



- ▶ Three-stage COAX® cartridge - MIDI - with high initial vacuum flow.
- ▶ Vacuum level to 90 -kPa at low feed pressure.
- ▶ High system reliability in case of fluctuating or low feed pressure.
- ▶ Suitable for fast evacuation of large volumes in sealed systems.
- ▶ Efficient generator of blow-air. Recommended for overpressures between 0.05 and 0.14 MPa.

Technical data

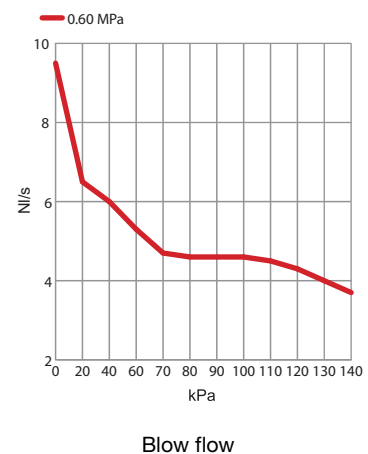
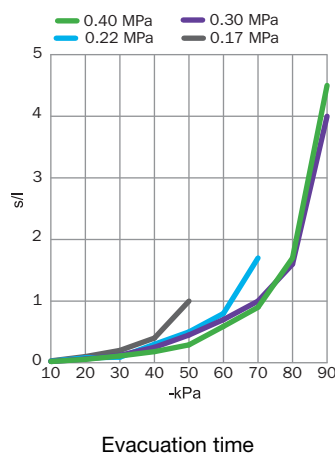
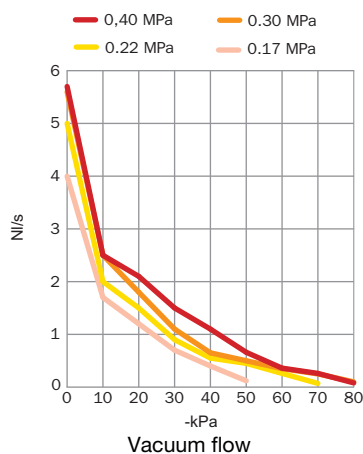
Description	Unit	Value
Feed pressure, max.	MPa	0.7
Temperature range	°C	-10-80
Weight	g	33-70
Material		Al, NBR, PA, SS

Vacuum flow

Feed pressure MPa	Air consumption NI/s	Vacuum flow (NI/s) at different vacuum levels (-kPa)										Max vacuum -kPa
		0	10	20	30	40	50	60	70	80	90	
0.17	1.37	4.0	1.7	1.2	0.70	0.40	0.12	—	—	—	—	55
0.22	1.62	5.0	2.0	1.5	0.90	0.55	0.45	0.26	0.07	—	—	73
0.30	2.0	5.6	2.5	1.8	1.1	0.65	0.50	0.35	0.25	0.10	—	90
0.40	2.54	5.7	2.5	2.1	1.5	1.1	0.66	0.36	0.26	0.08	—	86

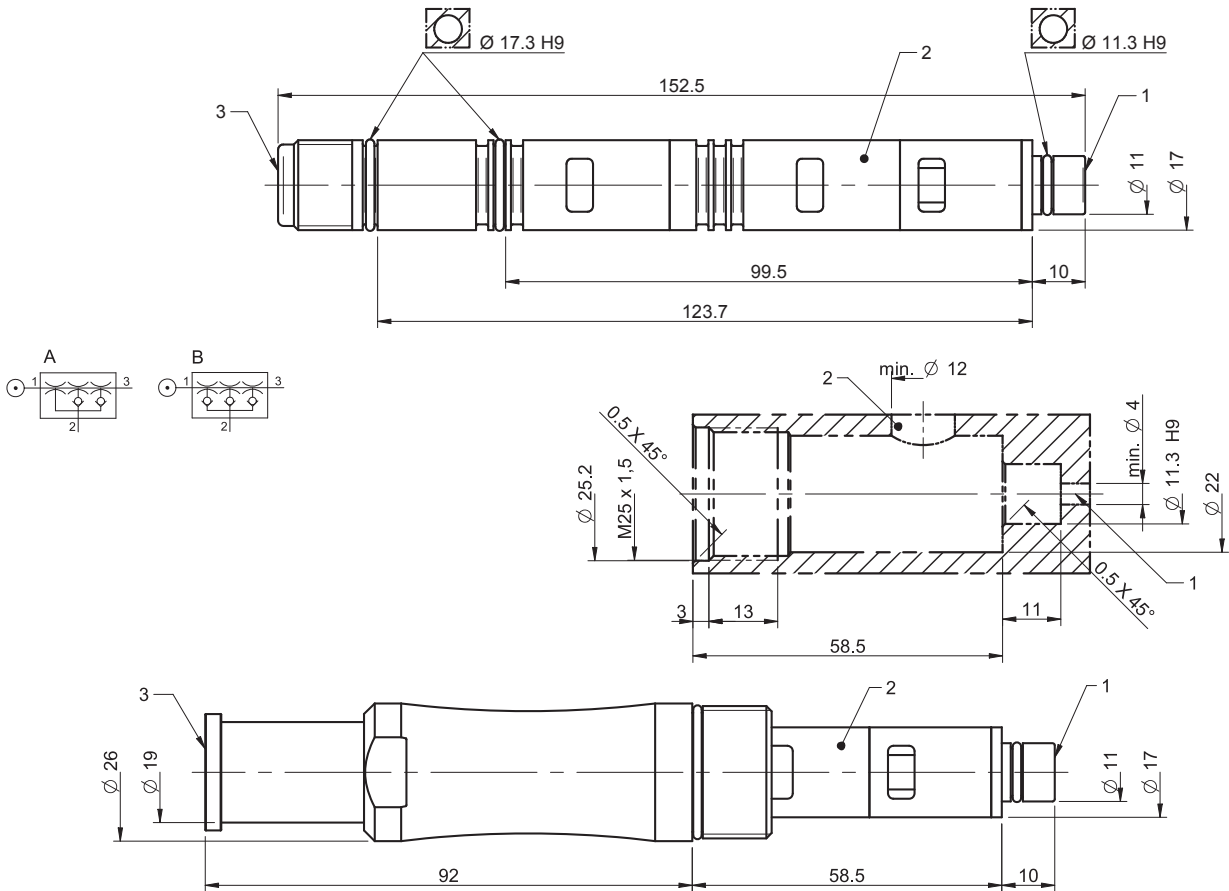
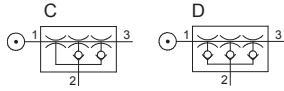
Evacuation time

Feed pressure MPa	Air consumption NI/s	Evacuation time (s/l) to reach different vacuum levels (-kPa)										Max vacuum -kPa
		10	20	30	40	50	60	70	80	90		
0.17	1.37	0.030	0.10	0.20	0.40	1.0	—	—	—	—	55	
0.22	1.62	0.025	0.080	0.17	0.30	0.50	0.80	1.7	—	—	73	
0.30	2.0	0.020	0.060	0.12	0.25	0.45	0.70	1.0	1.6	4.0	90	
0.40	2.54	0.020	0.055	0.11	0.18	0.29	0.59	0.90	1.7	4.5	86	



Ordering information

	Description	Art. No.
C	COAX® cartridge MIDI Pi48-3	0106639
A	COAX® cartridge MIDI Pi48-3, holding cap	0107129
D	COAX® cartridge MIDI Pi48-3, extra non-return valve	0107714
B	COAX® cartridge MIDI Pi48-3, holding cap, extra non-return valve	0107716



Ordering information, accessories

Description	Art. No.
Silencer COAX® MIDI	0111976

Si32-2



- ▶ Two-stage COAX® cartridge - MIDI - with small mounting dimension for limited spaces.
- ▶ Large vacuum flow in relation to energy consumption.
- ▶ Suitable for high-volume evacuation when handling porous materials or if surface leakage is present.
- ▶ Efficient generator of blow-air. Recommended for low overpressures (0 - 0.05 MPa).

Technical data

Description	Unit	Value
Feed pressure, max.	MPa	0.7
Temperature range	°C	-10-80
Weight	g	27-57
Material		Al, NBR, PA, SS

Vacuum flow

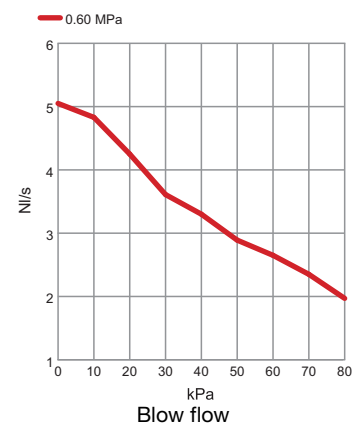
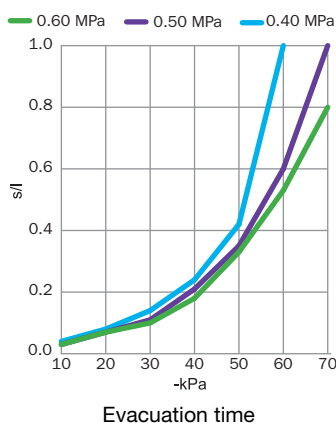
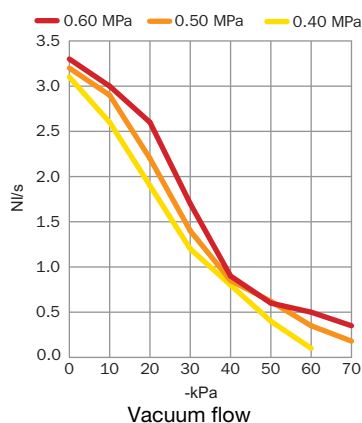
Feed pressure MPa	Air consumption NI/s	Vacuum flow (NI/s) at different vacuum levels (-kPa)								Max vacuum -kPa
		0	10	20	30	40	50	60	70	
0.40	1.25	3.1	2.6	1.9	1.2	0.80	0.40	0.1	—	60
0.50	1.50	3.2	2.9	2.2	1.4	0.85	0.62	0.35	0.18	70
0.60	1.75	3.3	3.0	2.6	1.7	0.90	0.60	0.50	0.35	75

Evacuation time

Feed pressure MPa	Air consumption NI/s	Evacuation time (s/l) to reach different vacuum levels (-kPa)							Max vacuum -kPa
		10	20	30	40	50	60	70	
0.40	1.25	0.040	0.080	0.14	0.24	0.42	1.0	—	60
0.50	1.50	0.030	0.070	0.11	0.21	0.35	0.60	1.0	70
0.60	1.75	0.030	0.070	0.10	0.18	0.33	0.53	0.80	75

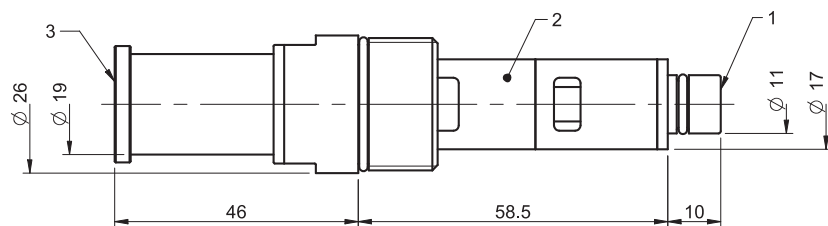
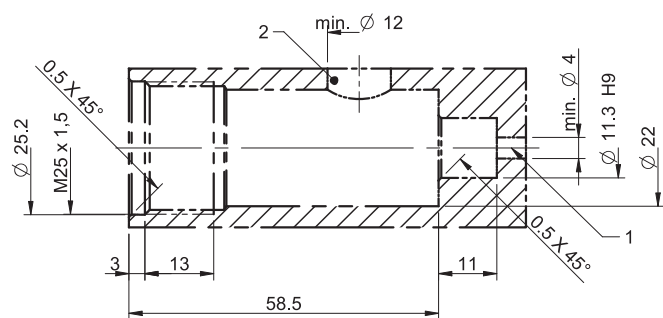
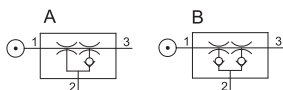
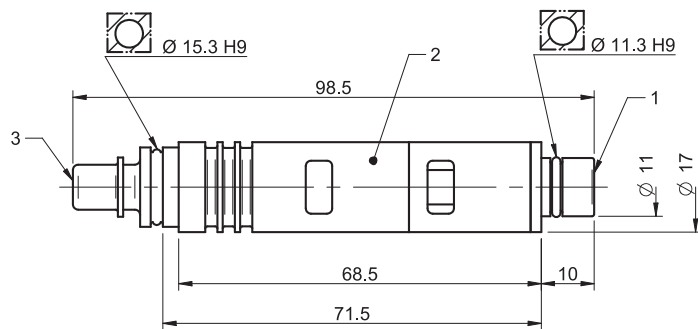
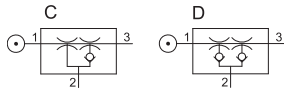
Blow flow

Feed pressure MPa	Air consumption NI/s	Blow flow (NI/s) at different pressure levels (kPa)										Max pressure kPa
		0	10	20	30	40	50	60	70	80		
0.6	1.75	5.05	4.83	4.25	3.61	3.30	2.89	2.65	2.35	1.97	80	



Ordering information

	Description	Art. No.
C	COAX® cartridge MIDI Si32-2	0107124
A	COAX® cartridge MIDI Si32-2, holding cap	0107126
D	COAX® cartridge MIDI Si32-2, extra non-return valve	0107709
B	COAX® cartridge MIDI Si32-2, holding cap, extra non-return valve	0107711



Ordering information, accessories

Description	Art. No.
Silencer COAX® MIDI	0111976

Si32-3



- ▶ Three-stage COAX® cartridge - MIDI - with extra high initial vacuum flow.
- ▶ Large vacuum flow in relation to energy consumption.
- ▶ Suitable for fast evacuation of large volumes when handling porous materials or if surface leakage is present.
- ▶ Efficient generator of blow-air.
Recommended for low overpressures (0 - 0.05 MPa).

Technical data

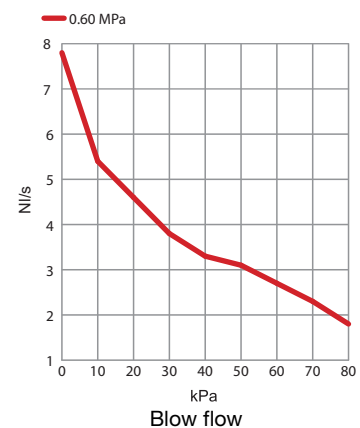
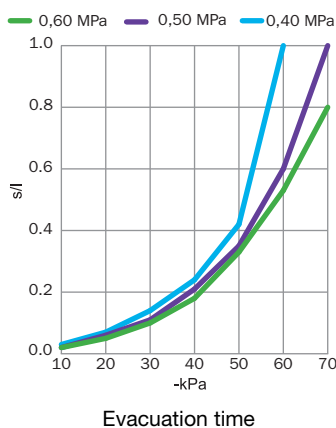
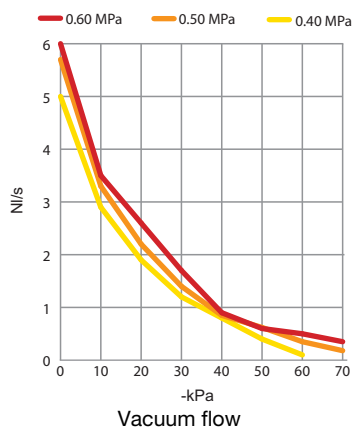
Description	Unit	Value
Feed pressure, max.	MPa	0.7
Temperature range	°C	-10-80
Weight	g	33-70
Material		Al, NBR, PA, SS

Vacuum flow

Feed pressure MPa	Air consumption NI/s	Vacuum flow (NI/s) at different vacuum levels (-kPa)								Max vacuum -kPa
		0	10	20	30	40	50	60	70	
0.40	1.25	5.0	2.9	1.9	1.2	0.80	0.40	0.10	—	60
0.50	1.5	5.7	3.3	2.2	1.4	0.85	0.62	0.35	0.18	70
0.60	1.75	6.0	3.5	2.6	1.7	0.90	0.60	0.50	0.35	75

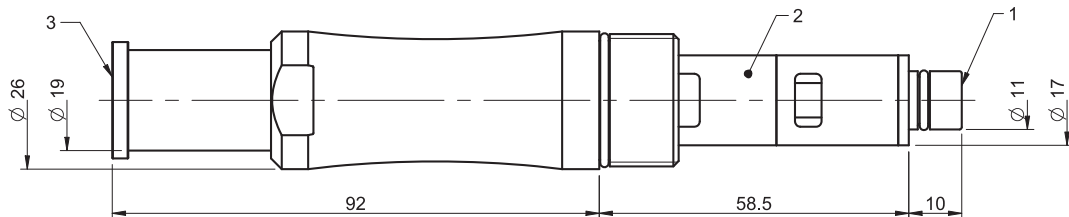
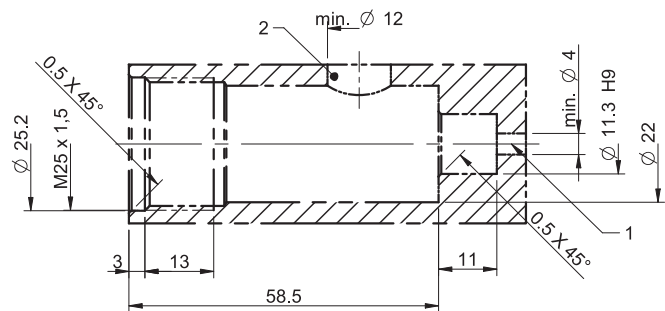
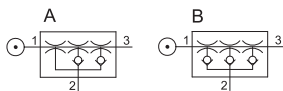
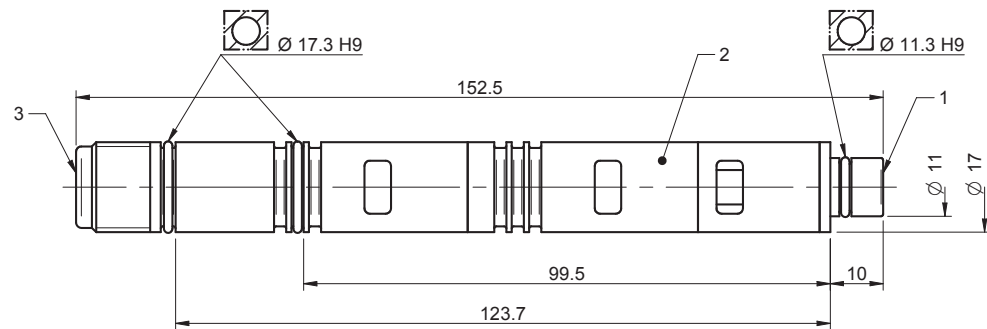
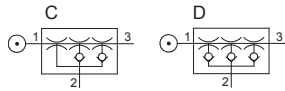
Evacuation time

Feed pressure MPa	Air consumption NI/s	Evacuation time (s/l) to reach different vacuum levels (-kPa)							Max vacuum -kPa
		10	20	30	40	50	60	70	
0.40	1.25	0.030	0.070	0.14	0.24	0.42	1.0	—	60
0.50	1.5	0.020	0.060	0.11	0.21	0.35	0.60	1.0	70
0.60	1.75	0.020	0.050	0.10	0.18	0.33	0.53	0.80	75



Ordering information

	Description	Art. No.
C	COAX® cartridge MIDI Si32-3	0107053
A	COAX® cartridge MIDI Si32-3, holding cap	0107128
D	COAX® cartridge MIDI Si32-3, extra non-return valve	0107713
B	COAX® cartridge MIDI Si32-3, holding cap, extra non-return valve	0107715



Ordering information, accessories

Description	Art. No.
Silencer COAX® MIDI	0111976

Xi40-2



- ▶ Two-stage COAX® cartridge – MIDI – with small mounting dimensions for limited spaces
- ▶ Deep end vacuum level, 95 -kPa
- ▶ High vacuum flow at deep vacuum levels, 75 to 95 -kPa
- ▶ Quick response time when deep vacuum is needed
- ▶ The all-round characteristics makes it suitable for several types of vacuum applications

Technical data

Description	Unit	Value
Feed pressure, max.	MPa	0.7
Temperature range	°C	-10-80
Weight	g	18.5-54.7
Material		Al, NBR, PA, SS

Vacuum flow

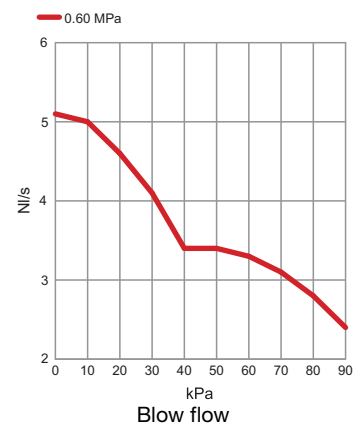
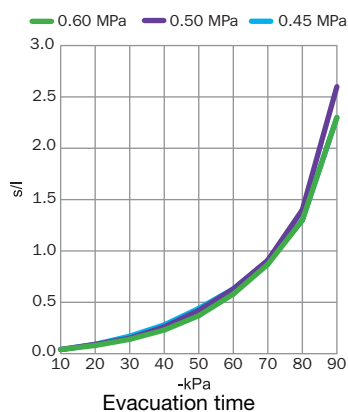
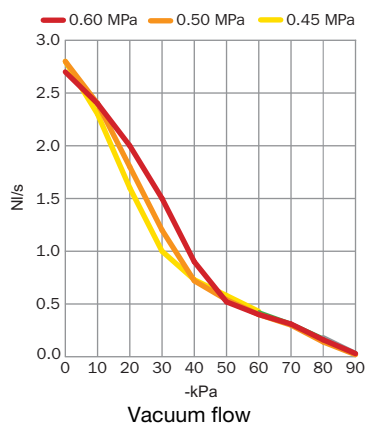
Feed pressure MPa	Air consumption NI/s	Vacuum flow (NI/s) at different vacuum levels (-kPa)											Max vacuum -kPa
		0	10	20	30	40	50	60	70	80	90		
0.45	1.83	2.8	2.3	1.6	1.0	0.73	0.58	0.43	0.32	0.18	0.03	95	
0.50	2.0	2.8	2.4	1.8	1.2	0.72	0.54	0.40	0.30	0.14	0.02	94	
0.60	2.33	2.7	2.4	2.0	1.5	0.90	0.52	0.40	0.31	0.16	0.03	94	

Evacuation time

Feed pressure MPa	Air consumption NI/s	Evacuation time (s/l) to reach different vacuum levels (-kPa)										Max vacuum -kPa
		10	20	30	40	50	60	70	80	90		
0.45	1.83	0.04	0.09	0.17	0.28	0.44	0.63	0.90	1.3	2.3	95	
0.50	2.0	0.04	0.09	0.15	0.26	0.42	0.63	0.91	1.4	2.6	94	
0.60	2.33	0.04	0.08	0.14	0.23	0.37	0.58	0.87	1.3	2.3	94	

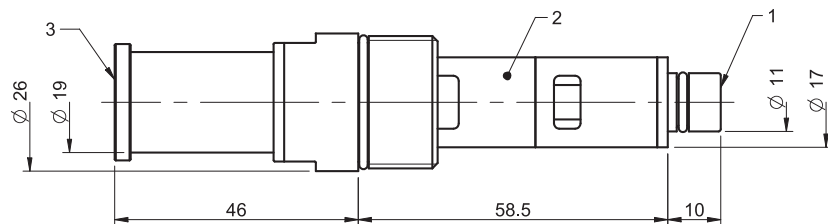
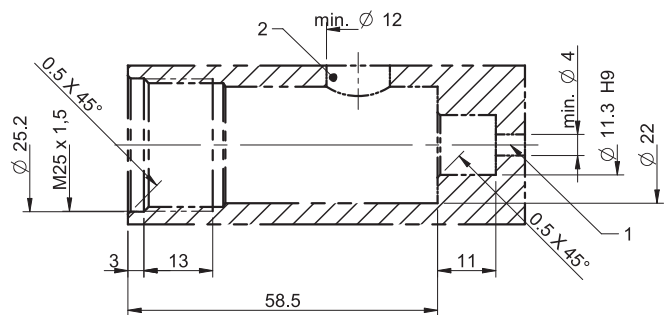
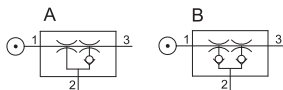
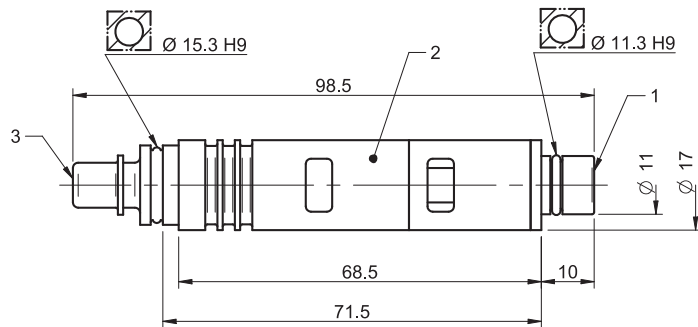
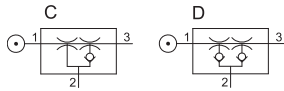
Blow flow

Feed pressure MPa	Air consumption NI/s	Blow flow (NI/s) at different pressure levels (kPa)											Max pressure kPa
		0	10	20	30	40	50	60	70	80	90		
0.6	2.33	5.1	5.0	4.6	4.1	3.4	3.4	3.3	3.1	2.8	2.4	90	



Ordering information

	Description	Art. No.
C	COAX® cartridge MIDI Xi40-2	0118747
A	COAX® cartridge MIDI Xi40-2, holding cap	0118757
D	COAX® cartridge MIDI Xi40-2, extra non-return valve	0118748
B	COAX® cartridge MIDI Xi40-2, holding cap, extra non-return valve	0118758



Ordering information, accessories

Description	Art. No.
Silencer COAX® MIDI	0111976

Xi40-3



- ▶ Three-stage COAX® cartridge – MIDI – with high initial vacuum flow
- ▶ Deep end vacuum level, 95 -kPa
- ▶ High vacuum flow at deep vacuum levels, 75 to 95 -kPa
- ▶ Quick response time when deep vacuum is needed
- ▶ The all-round characteristics makes it suitable for several types of vacuum applications

Technical data

Description	Unit	Value
Feed pressure, max.	Mpa	0.7
Temperature range	°C	-10-80
Weight	g	28.7-63.2
Material		Al, NBR, PA, SS

Vacuum flow

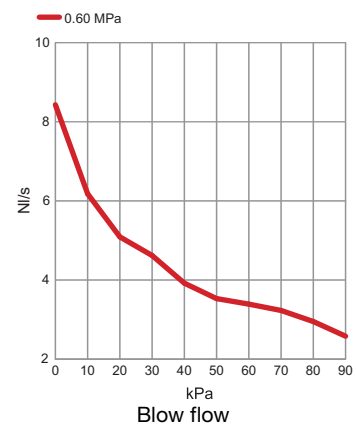
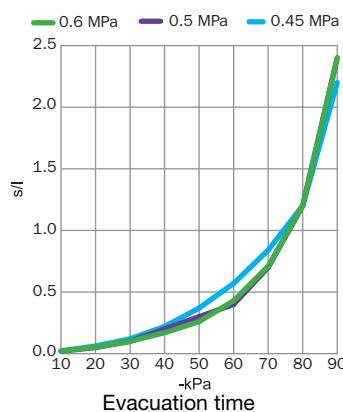
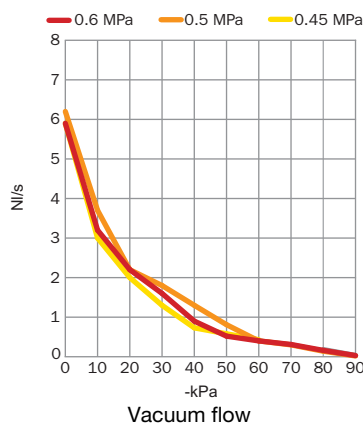
Feed pressure MPa	Air consumption NI/s	Vacuum flow (NI/s) at different vacuum levels (-kPa)										Max vacuum -kPa
		0	10	20	30	40	50	60	70	80	90	
0.45	1.83	5.9	3.0	2.0	1.3	0.73	0.58	0.43	0.32	0.18	0.03	95
0.50	2.0	6.2	3.7	2.2	1.8	1.3	0.81	0.40	0.30	0.14	0.02	94
0.60	2.33	5.9	3.2	2.2	1.6	0.90	0.52	0.40	0.31	0.16	0.03	94

Evacuation time

Feed pressure MPa	Air consumption NI/s	Evacuation time (s/l) to reach different vacuum levels (-kPa)										Max vacuum -kPa
		10	20	30	40	50	60	70	80	90		
0.45	1.83	0.022	0.062	0.12	0.22	0.37	0.57	0.84	1.2	2.2	95	
0.50	2.0	0.02	0.05	0.10	0.20	0.30	0.40	0.70	1.2	2.4	94	
0.60	2.33	0.02	0.054	0.10	0.17	0.26	0.43	0.71	1.2	2.4	94	

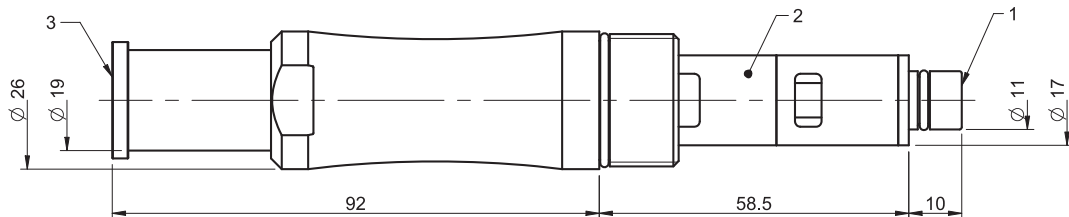
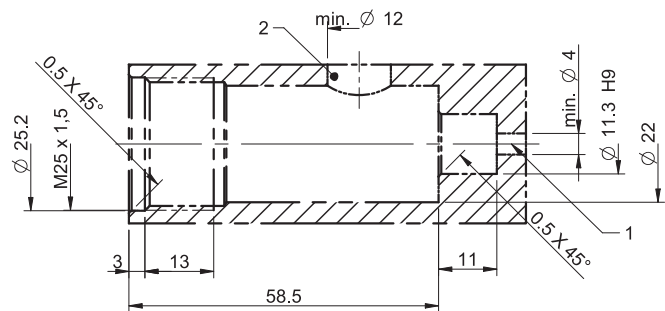
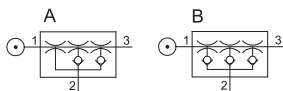
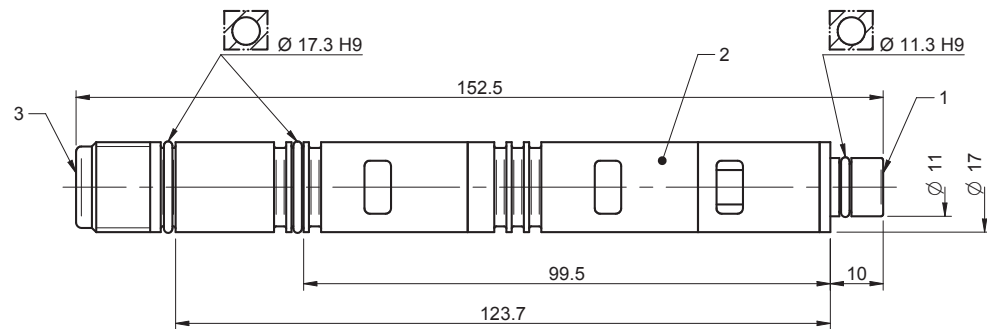
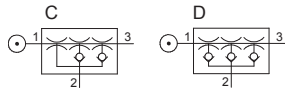
Blow flow

Feed pressure MPa	Air consumption NI/s	Blow flow (NI/s) at different pressure levels (kPa)										Max pressure kPa
		0	10	20	30	40	50	60	70	80	90	
0.60	2.33	8.43	6.18	5.09	4.62	3.92	3.53	3.39	3.23	2.95	2.58	90



Ordering information

	Description	Art. No.
C	COAX® cartridge MIDI Xi40-3	0118724
A	COAX® cartridge MIDI Xi40-3, holding cap	0118759
D	COAX® cartridge MIDI Xi40-3, extra non-return valve	0118725
B	COAX® cartridge MIDI Xi40-3, holding cap, extra non-return valve	0118760



Ordering information, accessories

Description	Art. No.
Silencer COAX® MIDI	0111976