

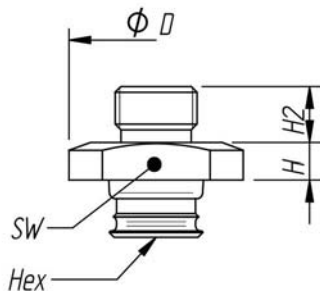
piGRIP® fittings



- ▶ All fittings are possible to use for all piGRIP® configurations.
- ▶ All fittings are also suitable for suction cups B50, B50-2, B50MF, BL50-2, BX52P, D50, F50-2, F50MF, U50-2.
- ▶ Integrated mesh filter as an option, keeps particles away.
- ▶ O-ring seal on straight threads to avoid leakage.
- ▶ Internal and external key handle on most fittings.

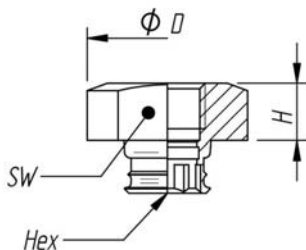
Technical data male thread G and M

Art. No.	Code	Description	Material	Weight g	Volume cm ³	Temp. range C°	Dimensions (mm)				
							H	H2	D	SW	HEX
9902441	G18M.00	piGRIP® Fitting G1/8" male	Al, NBR	5.0	1.2	-20-90	5	6	19	17	10
9902442	G18M.01	piGRIP® Fitting G1/8" male, with mesh filter	Al, SS, NBR	5.1	1.2		5	6	19	17	10
9902447	G14M.00	piGRIP® Fitting G1/4" male	Al, NBR	12.3	1.6		6	9	28	22	10
9902448	G14M.01	piGRIP® Fitting G1/4" male, with mesh filter	Al, SS, NBR	12.4	1.6		6	9	28	22	10
9902451	G38M.00	piGRIP® Fitting G3/8" male	Al, NBR	13.4	2.1		6	10	28	22	10
9902452	G38M.01	piGRIP® Fitting G3/8" male, with mesh filter	Al, SS, NBR	13.5	2.1		6	10	28	22	10
9902455	G12M.00	piGRIP® Fitting G1/2" male	Al, NBR	16.9	2.2		6	10	28	22	10
9902456	G12M.01	piGRIP® Fitting G1/2" male, with mesh filter	Al, SS, NBR	17.0	2.2		6	10	28	22	10
9902487	MM6M.00	piGRIP® Fitting M6 male	SS, NBR	14.1	0.9		5	6	19	17	10
9902488	MM6M.01	piGRIP® Fitting M6 male, with mesh filter	SS, NBR	14.2	0.9		5	6	19	17	10
9902493	MMF8M.00	piGRIP® Fitting M8 x 1 male	SS, NBR	14.1	1.1		5	6	19	17	10
9902494	MMF8M.01	piGRIP® Fitting M8 x 1 male, with mesh filter	SS, NBR	14.2	1.1		5	6	19	17	10
9902497	MM10M.00	piGRIP® Fitting M10 male	Al, NBR	6.1	1.4		6	10	19	17	10
9902498	MM10M.01	piGRIP® Fitting M10 male, with mesh filter	Al, SS, NBR	6.2	1.4		6	10	19	17	10
9902501	MMF14M.00	piGRIP® Fitting M14 x 1 male	Al, NBR	10.3	2.3		6	12	28	22	10
9902502	MMF14M.01	piGRIP® Fitting M14 x 1 male, with mesh filter	Al, SS, NBR	10.4	2.3		6	12	28	22	10
9902505	MMF16M.00	piGRIP® Fitting M16 x 1.5 male	Al, NBR	13.6	2.3		6	12	28	22	10
9902506	MMF16M.01	piGRIP® Fitting M16 x 1.5 male, with mesh filter	Al, SS, NBR	13.7	2.3		6	12	28	22	10



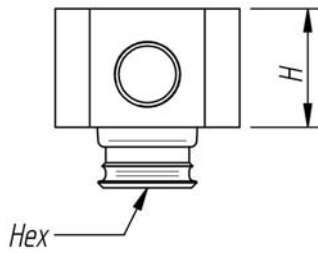
Technical data female thread

Art. No.	Code	Description	Material	Weight g	Volume cm ³	Temp. range C°	Dimensions (mm)			
							H	D	SW	HEX
9902445	G14F.00	piGRIP® Fitting G1/4" female	Al	11.7	1.9	-20- 120	10	28	22	10
9902446	G14F.01	piGRIP® Fitting G1/4" female, with mesh filter	Al, SS	11.8	1.9		10	28	22	10
9902449	G38F.00	piGRIP® Fitting G3/8" female	Al	13	3.1		13	28	22	10
9902450	G38F.01	piGRIP® Fitting G3/8" female, with mesh filter	Al, SS	13.1	3.1		13	28	22	10
9902453	G12F.00	piGRIP® Fitting G1/2" female	Al	13.6	4.6		14	28	22	10
9902454	G12F.01	piGRIP® Fitting G1/2" female, with mesh filter	Al, SS	13.7	4.6		14	28	22	10
9902485	MM5F.00	piGRIP® Fitting M5 female	Al	5.3	0.9		6	19	17	10
9902486	MM5F.01	piGRIP® Fitting M5 female, with mesh filter	Al, SS	5.4	0.9		6	19	17	10
9902489	MM6F.00	piGRIP® Fitting M6 female	Al	5.3	1.0		7	19	17	10
9902490	MM6F.01	piGRIP® Fitting M6 female, with mesh filter	Al, SS	5.4	1.0		7	19	17	10
9902491	MM8F.00	piGRIP® Fitting M8 female	Al	5.7	1.1		7	19	17	10
9902492	MM8F.01	piGRIP® Fitting M8 female, with mesh filter	Al, SS	5.8	1.1		7	19	17	10
9902495	MM10F.00	piGRIP® Fitting M10 female	Al	5.7	1.2		7	19	17	10
9902496	MM10F.01	piGRIP® Fitting M10 x 1 female, with mesh filter	Al, SS	5.8	1.2		7	19	17	10
9902499	MM12F.00	piGRIP® Fitting M12 female	Al	16.1	1.8		12	22	10	10
9902500	MM12F.01	piGRIP® Fitting M12 female, with mesh filter	Al, SS	16.2	1.8		12	22	10	10
9902503	MMF16F.00	piGRIP® Fitting M16 x 1.5 female	Al	13.6	2.9		13	22	10	10
9902504	MMF16F.01	piGRIP® Fitting M16 x 1.5 female, with mesh filter	Al, SS	13.7	2.9		13	22	10	10
9902439	NS18F.00	piGRIP® Fitting 1/8" NPSF female	Al	5.2	1.2		7	19	17	10
9902440	NS18F.01	piGRIP® Fitting 1/8" NPSF female, with mesh filter	Al, SS	5.3	1.2		7	19	17	10
9902479	NS14F.00	piGRIP® Fitting 1/4" NPSF female	Al	11.9	1.8		10	28	22	10
9902480	NS14F.01	piGRIP® Fitting 1/4" NPSF female, with mesh filter	Al, SS	12.0	1.8		10	28	22	10
9902481	NS38F.00	piGRIP® Fitting 3/8" NPSF female	Al	13.3	3.0		13	28	22	10
9902482	NS38F.01	piGRIP® Fitting 3/8" NPSF female, with mesh filter	Al, SS	13.4	3.0		13	28	22	10
9902483	NS12F.00	piGRIP® Fitting 1/2" NPSF female	Al	14.3	4.3		14	28	22	10
9902484	NS12F.01	piGRIP® Fitting 1/2" NPSF female, with mesh filter	Al, SS	14.4	4.3		14	28	22	10
9902463	NT14F.00	piGRIP® Fitting 1/4" NPT female	Al	15.6	2.0		12	28	22	10
9902464	NT14F.01	piGRIP® Fitting 1/4" NPT female, with mesh filter	Al, SS	15.7	2.0		12	28	22	10
9902467	NT38F.00	piGRIP® Fitting 3/8" NPT female	Al	13.4	3.0	13	28	22	10	
9902468	NT38F.01	piGRIP® Fitting 3/8" NPT female, with mesh filter	Al, SS	13.5	3.0	13	28	22	10	
9902507	U12F.00	piGRIP® Fitting 1/2" UNC female	Al	15.9	1.9	12	28	22	10	
9902508	U12F.01	piGRIP® Fitting 1/2" UNC female, with mesh filter	Al, SS	16.0	1.9	12	28	22	10	



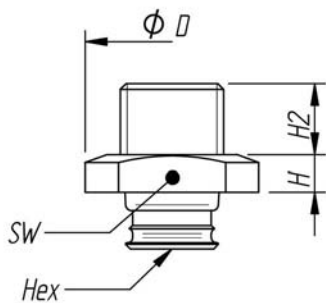
Technical data female thread 5x

Art. No.	Code	Description	Material	Weight g	Volume cm ³	Temp. range C°	Dimensions (mm)	
							H	HEX
9902443	NS518F.00	piGRIP® Fitting 5x1/8" NPSF female	Al	27.6	4.3	-20-120	18	10
9902444	NS518F.01	piGRIP® Fitting 5x1/8" NPSF female, with mesh filter	Al, SS	27.7	4.3		18	10



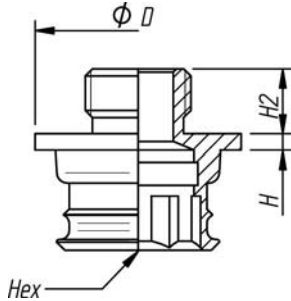
Technical data male thread NPT

Art. No.	Code	Description	Material	Weight g	Volume cm ³	Temp. range C°	Dimensions (mm)				
							H	H2	D	SW	HEX
9902465	NT18M.00	piGRIP® Fitting 1/8" NPT male	Al	5.2	1.2	-20-120	5	7	19	17	10
9902513	NT18M.01	piGRIP® Fitting 1/8" NPT male, with mesh filter	Al, SS	5.3	1.2		5	7	19	17	10
9902512	NT14M.00	piGRIP® Fitting 1/4" NPT male	Al	11.6	1.7		6	11	28	22	10
9902466	NT14M.01	piGRIP® Fitting 1/4" NPT male, with mesh filter	Al, SS	11.7	1.7		6	11	28	22	10
9902469	NT38M.00	piGRIP® Fitting 3/8" NPT male	Al	12.7	2.3		6	11.5	28	22	10
9902470	NT38M.01	piGRIP® Fitting 3/8" NPT male, with mesh filter	Al, SS	12.8	2.3		6	11.5	28	22	10
9902471	NT12M.00	piGRIP® Fitting 1/2" NPT male	Al	19.3	2.6		6	15	28	22	10
9902472	NT12M.01	piGRIP® Fitting 1/2" NPT male, with mesh filter	Al, SS	19.4	2.6		6	15	28	22	10



Technical data male thread low G and NPT

Art. No.	Code	Description	Material	Weight g	Volume cm ³	Temp. range C°	Dimensions (mm)			
							H	H2	D	HEX
9902457	GL18M.00	piGRIP® Fitting G1/8" low male	Al	3	1.1	-20- 120	1.5	6	19	10
9902458	GL18M.01	piGRIP® Fitting G1/8" low male, with mesh filter	Al, SS	3.1	1.1		1.5	6	19	10
9902459	GL14M.00	piGRIP® Fitting G1/4" low male	Al	5.5	1.3		1.5	9	28	10
9902460	GL14M.01	piGRIP® Fitting G1/4" low male, with mesh filter	Al, SS	5.6	1.3		1.5	9	28	10
9902461	GL38M.00	piGRIP® Fitting G3/8" low male	Al	6.9	1.8		1.5	10	28	10
9902462	GL38M.01	piGRIP® Fitting G3/8" low male, with mesh filter	Al, SS	7.0	1.8		1.5	10	28	10
9902473	NTL18M.00	piGRIP® Fitting 1/8" NPT low male	Al	3.2	1.1		1.5	7	19	10
9902474	NTL18M.01	piGRIP® Fitting 1/8" NPT low male, with mesh filter	Al, SS	3.3	1.1		1.5	7	19	10
9902475	NTL14M.00	piGRIP® Fitting 1/4" NPT low male	Al	6.2	1.4		1.5	11	28	10
9902476	NTL14M.01	piGRIP® Fitting 1/4" NPT low male, with mesh filter	Al, SS	6.3	1.4		1.5	11	28	10
9902477	NTL38M.00	piGRIP® Fitting 3/8" NPT low male	Al	7.7	1.9		1.5	11.5	28	10
9902478	NTL38M.01	piGRIP® Fitting 3/8" NPT low male, with mesh filter	Al, SS	7.8	1.9		1.5	11.5	28	10



Fitting 75



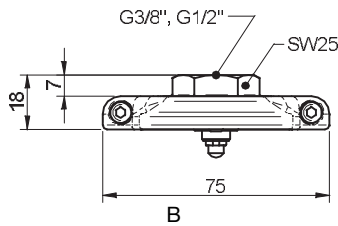
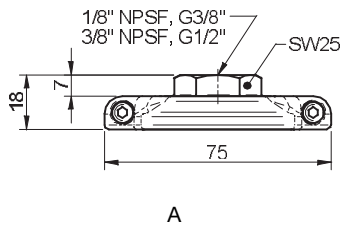
- ▶ **Suits suction cups:**
B75, B75P, B75-2, F75, F75P, FC100P
- ▶ **With cone valve only for:**
F75

Technical data

Description	Unit	Value	
		With mesh filter	With cone valve
Weight	g	70	75
Working temperature	°C	-20-120	-20-90
Material		Al/SS	Al/SS/NBR

Ordering information

	Description	Art. No.
A	Fitting 75, G3/8" female, with mesh filter	0100551
B	Fitting 75, G3/8" female, with cone valve	0100552
A	Fitting 75, G1/2" female, with mesh filter	0100555
B	Fitting 75, G1/2" female, with cone valve	0100556
A	Fitting 75, 3/8" NPSF female, with mesh filter	0100553
A	Fitting 75, 1/8" NPSF female, with mesh filter	0100548



Fitting 110



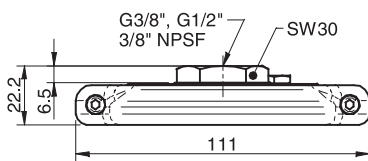
- ▶ Suits suction cups:
B110, B110-2, F110P, F110, FC150P
- ▶ With cone valve only for:
F110

Technical data

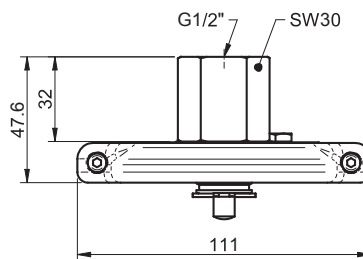
Description	Unit	Value	
		With mesh filter	With cone valve
Weight	g	240	290
Working temperature	°C	-20-90	-20-90
Material		Al/SS/CuZn/NBR	Al/SS/CuZn/NBR

Ordering information

	Description	Art. No.
A	Fitting 110 G3/8" female, with mesh filter	0100557
A	Fitting 110, G1/2" female, with mesh filter	0100561
B	Fitting 110, G1/2" female, with cone valve	0100563
A	Fitting 110, 3/8" NPSF female, with mesh filter	0100559



A



B

Fitting 150



Features

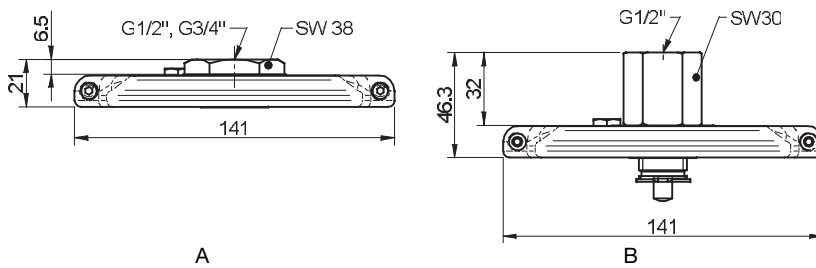
- ▶ Suits suction cups: B150, F150
- ▶ With cone valve only for: F150

Technical data

Description	Unit	Value	
		With mesh filter	With cone valve
Weight	g	355	415
Working temperature	°C	-20-90	-20-90
Material		Al/SS/CuZn/NBR	Al/SS/CuZn/NBR

Ordering information

	Description	Art. No.
A	Fitting 150, G1/2" female, with mesh filter	0100564
B	Fitting 150, G1/2" female, with cone valve	0100566
A	Fitting 150, G3/4" female, with mesh filter	0100567



M2.5 male



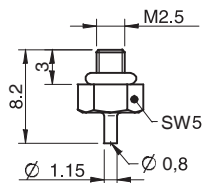
► Suits suction cups:
U2, U3

Technical data

Description	Unit	Value
Weight	g	0.5
Working temperature	°C	-20-90
Material		CuZn/NBR

Ordering information

Description	Art. No.
Fitting M2.5 male	3250084



M5 male



► Suits suction cups:
B5, B8, U4, U6, U8

Technical data

Description	Unit	Value
Weight	g	3
Working temperature	°C	-40-110
Material		CuZn/PA

Ordering information

Description	Art. No.
Fitting M5 male, 5-8	3107031

M5 male



- **Suits suction cups:**
 B10-2, B15-2, B15MF, D15-2, F15, F15MF, U10, U15

Technical data

Description	Unit	Value
Weight	g	4
Working temperature	°C	-40-110
Material		CuZn/PA

Ordering information

Description	Art. No.
Fitting M5 male, 10-15	3107030

M5 female



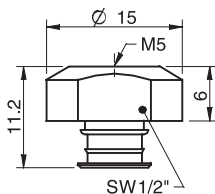
- **Suits suction cups:**
 B20, B20MF, BL20-2, D20-2, F20, F20MF, U20, F25, F25MF, FC20P, FC25P, D30-2, F30-2, F30MF, U30

Technical data

Description	Unit	Value	
		Without valve	With dual flow control valve
Weight	g	3	3
Working temperature	°C	-20-120	0-80
Material		Al	Al/PUR

Ordering information

Description	Art. No.
Fitting M5 female	3250003
Fitting M5 female, with dual flow control valve	3251001



G1/8" male



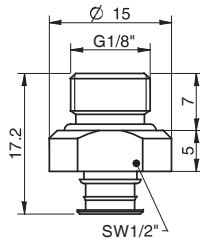
- ▶ **Suits suction cups:**
B20, B20MF, D20-2, F20, F20MF, U20, F25, F25MF, FC20P, FC25P, D30-2, F30-2, F30MF, U30

Technical data

Description	Unit	Value	
		With mesh filter	With dual flow control valve
Weight	g	3	3
Working temperature	°C	-20-90	0-80
Material		Al/SS/NBR	Al/SS/NBR/PUR

Ordering information

Description	Art. No.
Fitting G1/8" male, with mesh filter	3250085
Fitting G1/8" male, with mesh filter and dual flow control valve	3251002



G1/8" male / M5 female



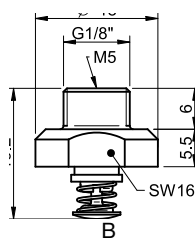
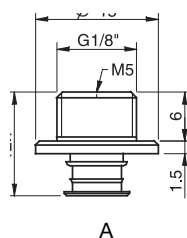
- ▶ **Suits suction cups:**
B20, B20MF, BL20-2, D20-2, F20, F20MF, U20, F25, F25MF, FC20P, FC25P, D30-2, F30-2, F30MF, U30
- ▶ **With cone valve only for:**
F30-2

Technical data

Description	Unit	Value		
		With mesh filter	With dual flow control valve	With cone valve
Weight	g	2	2	4
Working temperature	°C	-20-120	0-80	-20-90
Material		Al/SS	Al/PUR	Al/SS/NBR

Ordering information

	Description	Art. No.
A	Fitting G1/8" male/M5 female, with mesh filter	0101152
A	Fitting G1/8" male/M5 female, with dual flow control valve	3251004
B	Fitting G1/8" male/M5 female, with cone valve	0101155



G1/8" male / M5 female – Composite



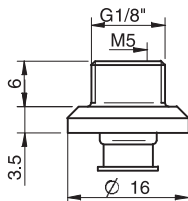
- ▶ Made of PA (Polyamide).
- ▶ Can be used on a number of Piab's suction cups in sizes from 20 to 50 mm.
- ▶ The weight of the composite fittings is approximately half the weight of corresponding fittings of aluminium.
- ▶ The fittings are durable and resistant to the most common acids and chemicals. They can be used in applications where aluminium cannot be used due to environmental issues, for example, in the chemical industry and the food industry.
- ▶ **Suits suction cups:** B20, BL20-2, D20-2, D30-2, F20, F25, F30-2, U20, U30

Technical data

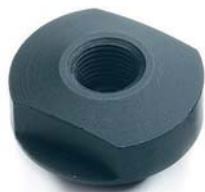
Description	Unit	Value
Weight	g	1.7
Working temperature	°C	-20–110
Material		PA composite

Ordering information

Description	Art. No.
Fitting G1/8" male/M5 female, PA	3150196



1/8" NPSF female



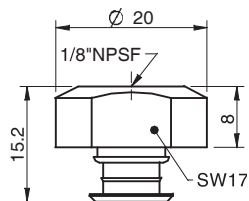
- ▶ **Suits suction cups:**
B30-2, B30MF, BL30-2, B40, B40MF, BL40-2, F40-2, F40MF, U40-2, FC35P
- ▶ **With cone valve only for:**
F40-2
- ▶ **Without mesh filter for:**
BX35P

Technical data

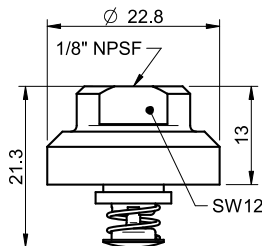
Description	Unit	Value			
		Without mesh filter	With mesh filter	With dual flow control valve	With cone valve
Weight	g	6	6	6	7
Working temperature	°C	-20-120	-20-120	0-80	-20-90
Material		Al	Al/SS	Al/PUR	Al/SS/NBR

Ordering information

	Description	Art. No.
A	Fitting 1/8" NPSF female, 30-40	3250005
A	Fitting 1/8" NPSF female, 30-40, with mesh filter	0101153
A	Fitting 1/8" NPSF female, 30-40, with dual flow control valve	3251006
B	Fitting 1/8" NPSF female, 30-40, with cone valve	0101156



A



B

1/8" NPSF female



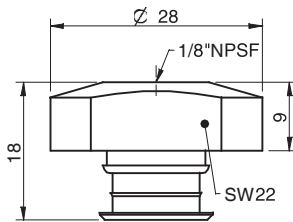
- ▶ **Suits suction cups:**
B50, B50-2, BX52P, B50MF, BL50-2, D50, F50-2, F50MF, U50-2
- ▶ **With cone valve only for:**
F50-2
- ▶ **Without mesh filter for:**
BX52P

Technical data

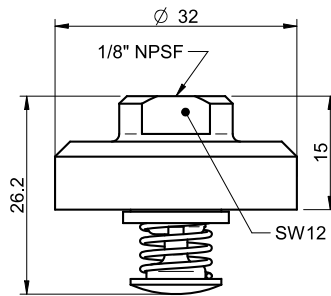
Description	Unit	Value			
		Without mesh filter	With mesh filter	With dual flow control valve	With cone valve
Weight	g	10	10	10	15
Working temperature	°C	-20-120	-20-120	0-80	-20-90
Material		Al	Al/SS	Al/PUR	Al/SS/NBR

Ordering information

	Description	Art. No.
A	Fitting 1/8" NPSF female, 50	3250017
A	Fitting 1/8" NPSF female, 50, with mesh filter	0101154
A	Fitting 1/8" NPSF female, 50, with dual flow control valve	3251012
B	Fitting 1/8" NPSF female, 50, with cone valve	0101157



A



B

1/8" NPSF female – Composite



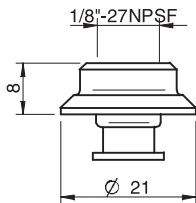
- ▶ Made of PA (Polyamide).
- ▶ Can be used on a number of Piab's suction cups in sizes from 20 to 50 mm.
- ▶ The weight of the composite fittings is approximately half the weight of corresponding fittings of aluminium.
- ▶ The fittings are durable and resistant to the most common acids and chemicals. They can be used in applications where aluminium cannot be used due to environmental issues, for example, in the chemical industry and the food industry.
- ▶ **Suits suction cups:** B30-2, B40, BL30-2, BL40-2, F40-2, U40-2

Technical data

Description	Unit	Value
Weight	g	2.4
Working temperature	°C	-20–110
Material		PA composite

Ordering information

Description	Art. No.
Fitting 1/8" NPSF female, 30–40, PA	3150197



1/8" NPSF female – Composite



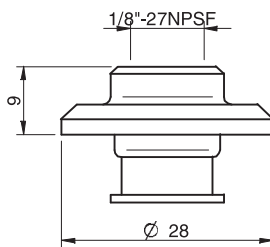
- ▶ Made of PA (Polyamide).
- ▶ Can be used on a number of Piab's suction cups in sizes from 20 to 50 mm.
- ▶ The weight of the composite fittings is approximately half the weight of corresponding fittings of aluminium.
- ▶ The fittings are durable and resistant to the most common acids and chemicals. They can be used in applications where aluminium cannot be used due to environmental issues, for example, in the chemical industry and the food industry.
- ▶ **Suits suction cups:** B50, B50-2, BL50-2, B50MF, D50, F50-2, U50-2

Technical data

Description	Unit	Value
Weight	g	5.6
Working temperature	°C	-20-110
Material		PA composite

Ordering information

Description	Art. No.
Fitting 1/8" NPSF female, 50, PA	3150198



G1/4" male with mesh filter



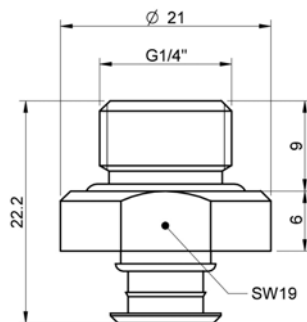
- **Suits suction cups:**
 B30-2, B30MF, BL30-2, B40,
 B40MF, BX35P, BL40-2, F40-2,
 F40MF, U40-2, FC35P

Technical data

Description	Unit	Value	
		With mesh filter	With dual flow control valve
Weight	g	7	7
Working temperature	°C	-20-90	0-80
Material		Al/SS/NBR	Al/SS/NBR/PUR

Ordering information

Description	Art. No.
Fitting G1/4" male, 30-40, with mesh filter	3250091
Fitting G1/4" male, 30-40, with mesh filter and dual flow control valve	3251007



G1/4" male with mesh filter



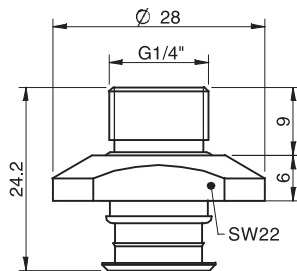
- **Suits suction cups:**
B50, B50-2, BX52P, B50MF,
BL50-2, D50, F50-2, F50MF, U50-2

Technical data

Description	Unit	Value	
		With mesh filter	With dual flow control valve
Weight	g	10	10
Working temperature	°C	-20-90	0-80
Material		Al/SS/NBR	Al/SS/NBR/PUR

Ordering information

Description	Art. No.
Fitting G1/4" male, 50, with mesh filter	3250092
Fitting G1/4" male, with mesh filter and dual flow control valve	3251013



G1/2" male



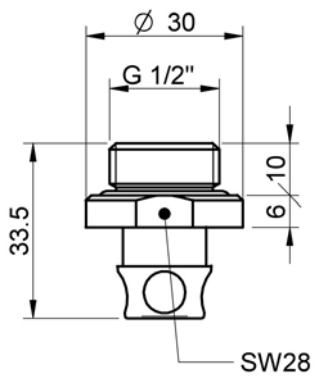
► Suits suction cup:
BL50-3P

Technical data

Description	Unit	Value
Weight	g	14
Working temperature	°C	-20-90
Material		Al/NBR

Ordering information

Description	Art. No.
Fitting G1/2" male, bag	0113117



1/2" NPT male



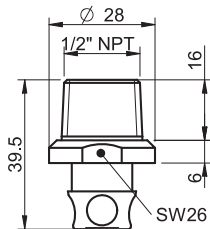
► Suits suction cup:
BL50-3P

Technical data

Description	Unit	Value
Weight	g	17
Working temperature	°C	-20-90
Material		Al

Ordering information

Description	Art. No.
Fitting 1/2" NPT male, bag	0113140



G3/8" male with mesh filter



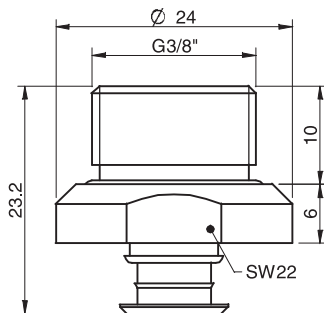
- ▶ **Suits suction cups:**
 B30-2, B30MF, BL30-2, B40,
 B40MF, BX35P, BL40-2, F40-2,
 F40MF, U40-2, FC35P

Technical data

Description	Unit	Value	
		With mesh filter	With dual flow control valve
Weight	g	10	10
Working temperature	°C	-20-90	0-80
Material		Al/SS/NBR	Al/SS/NBR/PUR

Ordering information

Description	Art. No.
Fitting G3/8" male, 30-40, with mesh filter	3250086
Fitting G3/8" male, 30-40, with mesh and dual flow control valve	3251009



G3/8" male with mesh filter



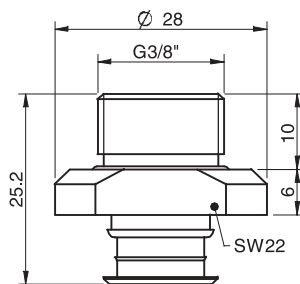
- **Suits suction cups:**
B50, B50-2, B50MF, BL50-2, D50, F50-2, F50MF, U50-2

Technical data

Description	Unit	Value	
		With mesh filter	With dual flow control valve
Weight	g	10	10
Working temperature	°C	-20-90	0-80
Material		Al/SS/NBR	Al/SS/NBR/PUR

Ordering information

Description	Art. No.
Fitting G3/8" male, 50, with mesh filter	3250087
Fitting G3/8" male, 50, with mesh filter and dual flow control valve	3251015



G3/8" male



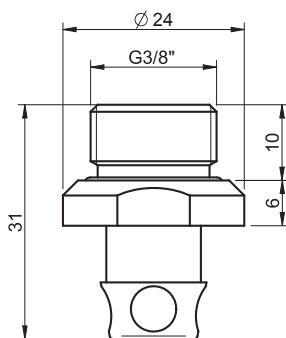
► Suits suction cup:
BL30-3P, BL40-3P

Technical data

Description	Unit	Value
Weight	g	12
Working temperature	°C	-20-90
Material		Al/NBR

Ordering information

Description	Art. No.
Fitting G3/8" male, bag	0112662



3/8" NPT male



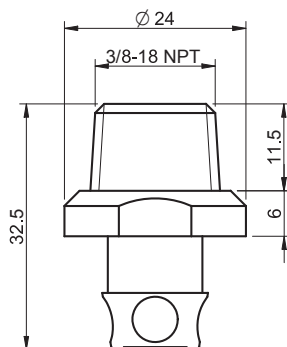
► Suits suction cup:
BL30-3P, BL40-3P

Technical data

Description	Unit	Value
Weight	g	12
Working temperature	°C	-20–120
Material		Al

Ordering information

Description	Art. No.
Fitting 3/8" NPT male, bag	0112692



5xM5 female



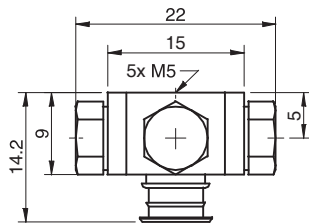
- **Suits suction cups:**
 B20, B20MF, BL20-2, D20-2, F20, F20MF, U20, F25, F25MF, FC20P, FC25P, D30-2, F30-2, F30MF, U30

Technical data

Description	Unit	Value	
		With mesh filter	With dual flow control valve
Weight	g	10	10
Working temperature	°C	-20-120	0-80
Material		Al/CuZn/PA	Al/CuZn/PA/PUR

Ordering information

Description	Art. No.
Fitting 5xM5 female	0100260
Fitting 5xM5 female, with dual flow control valve	3251005



5x1/8" NPSF female



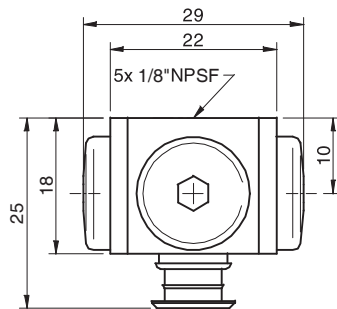
- **Suits suction cups:**
 B30-2, B30MF, BL30-2, B40,
 B40MF, BX35P, BL40-2, F40-2,
 F40MF, U40-2, FC35P

Technical data

Description	Unit	Value	
		With mesh filter	With dual flow control valve
Weight	g	20	20
Working temperature	°C	-20-90	0-80
Material		AI/PPS/NBR	AI/PPS/NBR/PUR

Ordering information

Description	Art. No.
Fitting 5x1/8" NPSF female, 30-40	0100261
Fitting 5x1/8" NPSF female, 30-40, with dual flow control valve	3251011



5x1/8" NPSF female



- Suits suction cups:
B50, B50-2, BX52P, B50MF ,
BL50-2, D50, F50-2, F50MF, U50-2

Technical data

Description	Unit	Value	
		With mesh filter	With dual flow control valve
Weight	g	30	30
Working temperature	°C	-20-90	0-80
Material		AI/PPS/NBR	AI/PPS/NBR/PUR

Ordering information

Description	Art. No.
Fitting 5x1/8" NPSF female, 50	0100262
Fitting 5x1/8" NPSF female, 50, with dual flow control valve	3251017

