

OP20x100



Oval suction cup with cellular rubber profile

- ▶ Suitable for handling oblong objects or thin pieces with uneven and rough surfaces.
- ▶ Use a ball joint fitting if prone to bending.

Lifting forces & Technical data

Lifting force vertical to the surface, N, at vacuum level			Lifting force parallel to the surface, N, at vacuum level			Volume cm ³	Min. curve radius mm	Max. vertical movement mm	Weight with fitting g
20 -kPa	60 -kPa	90 -kPa	20 -kPa	60 -kPa	90 -kPa				
25	80	110	—	—	—	14.0	—	1.5	87

Material specifications

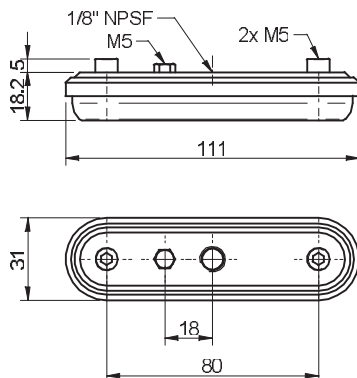
Material	Colour	Hardness °Shore A	Temperature range °C
Ethylene propylene, EPDM	Grey	—	-40-100

Material resistance

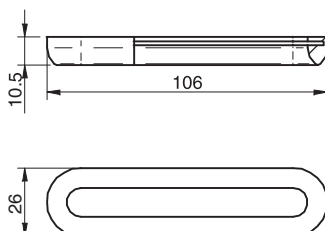
Wear resistance	Oil	Weather & Ozone	Hydrolysis	Petrol	Concentrated acids	Alcohol	Oxidation
Fair	Poor	Excellent	Good	Poor	Poor	Excellent	Excellent

Ordering information

Complete suction cups	Art. No.
Suction cup OP20x100 Ethylene propylene, 1/8" NPSF female	3350050



Rubber parts	Art. No.
Suction cup OP20x100 Ethylene propylene	3350028



Fittings	Art. No.
Fitting 1/8" NPSF female	3350061

OP40x200



Oval suction cup with cellular rubber profile

- ▶ Suitable for handling oblong objects or thin pieces with uneven and rough surfaces.
- ▶ Use a ball joint fitting if prone to bending.

Lifting forces & Technical data

Lifting force vertical to the surface, N, at vacuum level			Lifting force parallel to the surface, N, at vacuum level			Volume	Min. curve radius	Max. vertical movement	Weight with fitting
20 -kPa	60 -kPa	90 -kPa	20 -kPa	60 -kPa	90 -kPa	cm ³	mm	mm	g
100	320	440	—	—	—	56	—	2.5	326

Material specifications

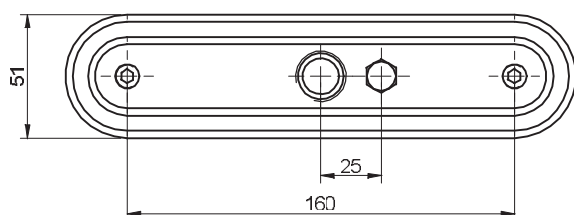
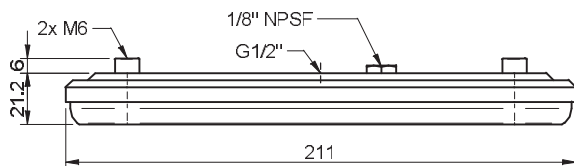
Material	Colour	Hardness °Shore A	Temperature range °C
Ethylene propylene, EPDM	Grey	—	-40–100

Material resistance

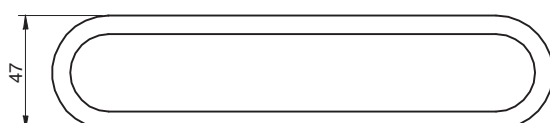
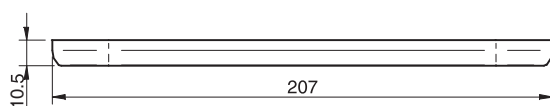
Wear resistance	Oil	Weather & Ozone	Hydrolysis	Petrol	Concentrated acids	Alcohol	Oxidation
Fair	Poor	Excellent	Good	Poor	Poor	Excellent	Excellent

Ordering information

Complete suction cups	Art. No.
Suction cup OP40x200 Ethylene propylene, G1/2" female	3350051

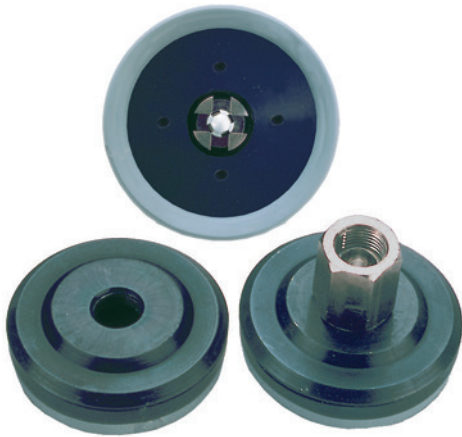


Rubber parts	Art. No.
Suction cup OP40x200 Ethylene propylene	3350029



Fittings	Art. No.
Fitting G1/2" female	3350062

P35



Suction cup with cellular rubber profile

- ▶ Suitable for irregular and rough surfaces.
- ▶ Use a ball joint if prone to bending.
- ▶ Available with adjustable support for handling thin material. Also suitable for applications requiring accurate positioning.
- ▶ Can also be equipped with a cone valve.

Lifting forces & Technical data

Lifting force vertical to the surface, N, at vacuum level			Lifting force parallel to the surface, N, at vacuum level			Volume cm ³	Min. curve radius mm	Max. vertical movement mm	Weight with fitting g
20 -kPa	60 -kPa	90 -kPa	20 -kPa	60 -kPa	90 -kPa				
20.0	50	70	—	—	—	6.0	—	3.0	22

Material specifications

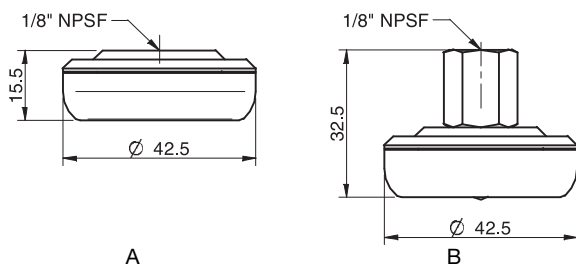
Material	Colour	Hardness °Shore A	Temperature range °C
Ethylene propylene, EPDM	Grey	—	-40–100

Material resistance

Wear resistance	Oil	Weather & Ozone	Hydrolysis	Petrol	Concentrated acids	Alcohol	Oxidation
Fair	Poor	Excellent	Good	Poor	Poor	Excellent	Excellent

Ordering information

	Complete suction cups	Art. No.
A	Suction cup P35 Ethylene propylene, 1/8" NPSF female	3350045
B	Suction cup P35 Ethylene propylene, 1/8" NPSF female, with cone valve	3350038
B	Suction cup P35 Ethylene propylene, 1/8" NPSF female, adjustable support with filter	3350035



Rubber parts	Art. No.
Suction cup P35 Ethylene propylene	3350023

Fittings & accessories	Art. No.
Fitting 1/8" NPSF female	3350100
Adjustable support for P35, with filter	3350030
Cone valve for P35 & P60	3350033

P60



Suction cup with cellular rubber profile

- ▶ Suitable for irregular and rough surfaces.
- ▶ Use a ball joint if prone to bending.
- ▶ Available with adjustable support for handling thin material. Also suitable for applications requiring accurate positioning.
- ▶ Can also be equipped with a cone valve.

Lifting forces & Technical data

Lifting force vertical to the surface, N, at vacuum level			Lifting force parallel to the surface, N, at vacuum level			Volume cm ³	Min. curve radius mm	Max. vertical movement mm	Weight with fitting g
20 -kPa	60 -kPa	90 -kPa	20 -kPa	60 -kPa	90 -kPa				
60	150	220	—	—	—	20.0	—	3.0	60

Material specifications

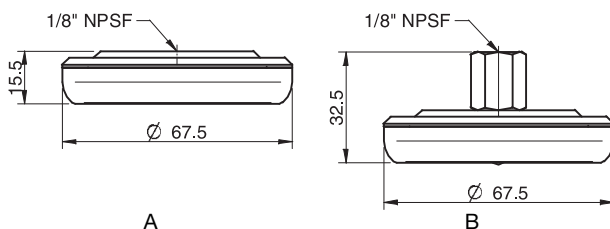
Material	Colour	Hardness °Shore A	Temperature range °C
Ethylene propylene, EPDM	Grey	—	-40–100

Material resistance

Wear resistance	Oil	Weather & Ozone	Hydrolysis	Petrol	Concentrated acids	Alcohol	Oxidation
Fair	Poor	Excellent	Good	Poor	Poor	Excellent	Excellent

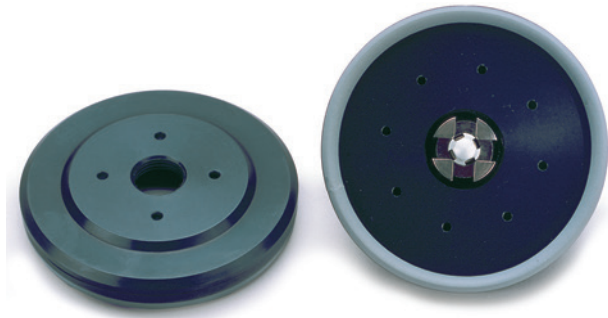
Ordering information

	Complete suction cups	Art. No.
A	Suction cup P60 Ethylene propylene, 1/8" NPSF female	3350046
B	Suction cup P60 Ethylene propylene, 1/8" NPSF female, with cone valve	3350039
B	Suction cup P60 Ethylene propylene, 1/8" NPSF female, adjustable support with filter	3350036



Rubber parts	Art. No.
Suction cup P60 Ethylene propylene	3350024
Fittings & accessories	Art. No.
1/8" NPSF female	3350110
Adjustable support	3350031
Cone valve	3350033

P100



Suction cup with cellular rubber profile

- ▶ Suitable for irregular and rough surfaces.
- ▶ Use a ball joint if prone to bending.
- ▶ Available with adjustable support for handling thin material. Also suitable for applications requiring accurate positioning.
- ▶ Can also be equipped with a cone valve.

Lifting forces & Technical data

Lifting force vertical to the surface, N, at vacuum level			Lifting force parallel to the surface, N, at vacuum level			Volume cm ³	Min. curve radius mm	Max. vertical movement mm	Weight with fitting g
20 -kPa	60 -kPa	90 -kPa	20 -kPa	60 -kPa	90 -kPa				
180	450	660	—	—	—	55	—	3.0	236

Material specifications

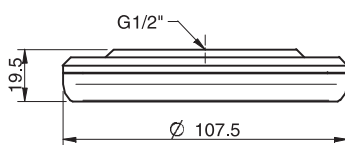
Material	Colour	Hardness °Shore A	Temperature range °C
Ethylene propylene, EPDM	Grey	—	-40–100

Material resistance

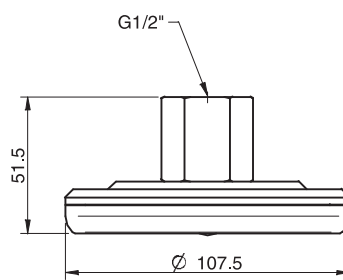
Wear resistance	Oil	Weather & Ozone	Hydrolysis	Petrol	Concentrated acids	Alcohol	Oxidation
Fair	Poor	Excellent	Good	Poor	Poor	Excellent	Excellent

Ordering information

	Complete suction cups	Art. No.
A	Suction cup P100 Ethylene propylene, G1/2" female	3350047
B	Suction cup P100 Ethylene propylene, G1/2" female, with cone valve	3350040
B	Suction cup P100 Ethylene propylene, G1/2" female, adjustable support with filter	3350037



A



B

Rubber parts	Art. No.
Suction cup P100 Ethylene propylene	3350025

Fittings & accessories	Art. No.
Fitting G1/2" female	3350115
Adjustable support for P100, with filter	3350032
Cone valve for P100	3350058

P200



Suction cup with cellular rubber profile

- ▶ Suitable for irregular and rough surfaces.
- ▶ Use a ball joint if prone to bending.

Lifting forces & Technical data

Lifting force vertical to the surface, N, at vacuum level			Lifting force parallel to the surface, N, at vacuum level			Volume cm ³	Min. curve radius mm	Max. vertical movement mm	Weight with fitting g
20 -kPa	60 -kPa	90 -kPa	20 -kPa	60 -kPa	90 -kPa				
750	1900	2700	—	—	—	543	—	5.0	1245

Material specifications

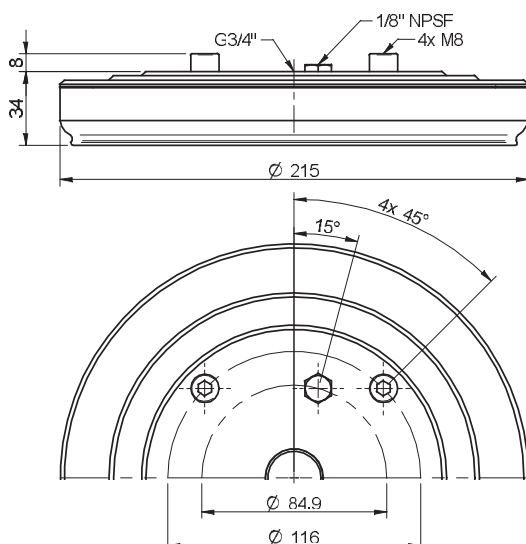
Material	Colour	Hardness °Shore A	Temperature range °C
Ethylene propylene, EPDM	Grey	—	-40–100

Material resistance

Wear resistance	Oil	Weather & Ozone	Hydrolysis	Petrol	Concentrated acids	Alcohol	Oxidation
Fair	Poor	Excellent	Good	Poor	Poor	Excellent	Excellent

Ordering information

Complete suction cups	Art. No.
Suction cup P200 Ethylene propylene, G3/4" female	3350048



Rubber parts	Art. No.
Suction cup P200 Ethylene propylene	3350026
Fittings & accessories	Art. No.
Fitting G3/4" female	3350059
Support kit for suction cups P200 & FP300, (2 kits needed)	0106747

P300



Suction cup with cellular rubber profile

- ▶ Suitable for irregular and rough surfaces.
- ▶ Use a ball joint if prone to bending.

Lifting forces & Technical data

Lifting force vertical to the surface, N, at vacuum level			Lifting force parallel to the surface, N, at vacuum level			Volume cm ³	Min. curve radius mm	Max. vertical movement mm	Weight with fitting g
20 -kPa	60 -kPa	90 -kPa	20 -kPa	60 -kPa	90 -kPa				
1600	4300	6400	—	—	—	1285	—	5.0	2435

Material specifications

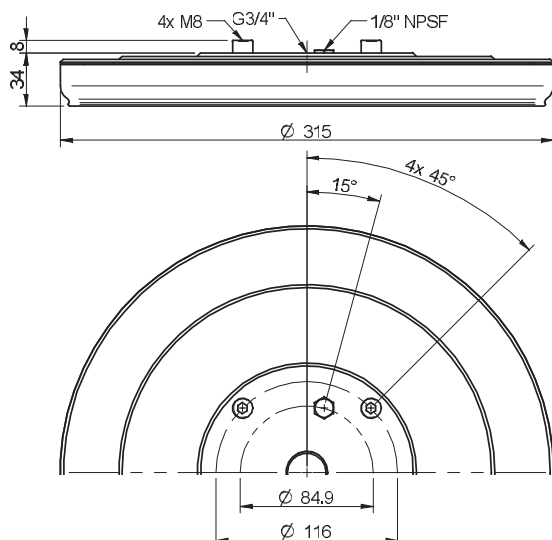
Material	Colour	Hardness °Shore A	Temperature range °C
Ethylene propylene, EPDM	Grey	—	-40–100

Material resistance

Wear resistance	Oil	Weather & Ozone	Hydrolysis	Petrol	Concentrated acids	Alcohol	Oxidation
Fair	Poor	Excellent	Good	Poor	Poor	Excellent	Excellent

Ordering information

Complete suction cups	Art. No.
Suction cup P300 Ethylene propylene, G3/4" female	3350049



Rubber parts	Art. No.
Suction cup P300 Ethylene propylene	3350027
Fittings & accessories	Art. No.
Fitting G3/4" female	3350060
Support kit for suction cup P300, (2 kits needed)	0106748